



## DAC-V1 Driver Installation

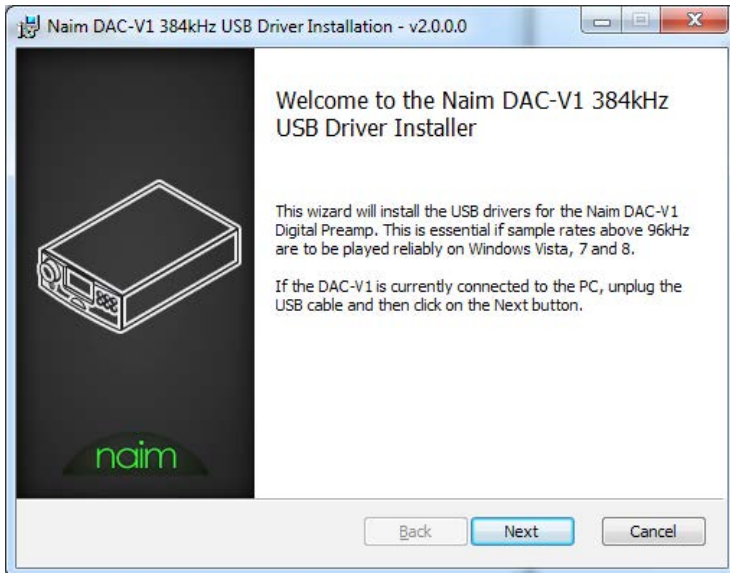


Your DAC-V1 will automatically be picked up by Windows as a basic USB audio device however to enjoy the advanced functionality of the product we recommend that you install the specific Naim DAC-V1 drivers and configure the Windows sound device options correctly, this will enable the playback of audio files of up to 384kHz / 24bit and allow bit perfect playback with audio applications that are able to access the playback device directly (e.g. via WASAPI) – for details on correctly configuring the Windows playback device settings please see the separate document ‘Windows Setup Instructions’.

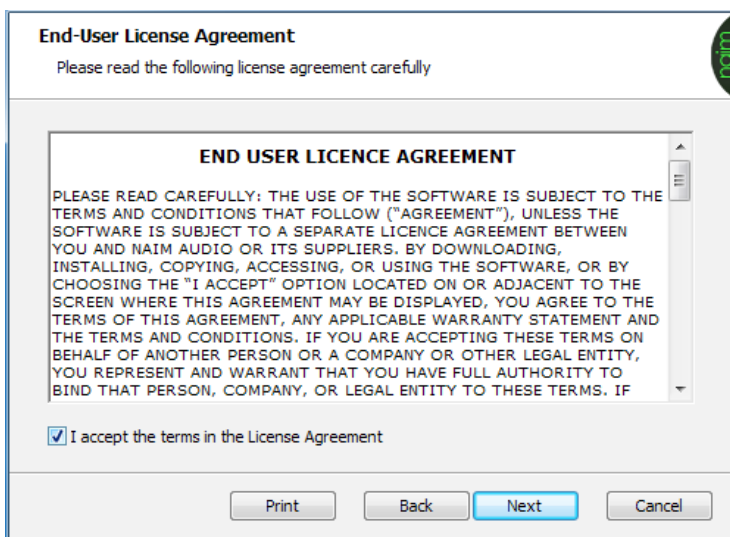
Should you have multiple user accounts on your PC then you will need to install the driver for every user account on which you wish to use the advanced functionality of the Naim DAC-V1.

If you have earlier drivers installed then we would strongly suggest removing / deleting them and then disconnecting the DAC-V1 before installing a later driver package - this will ensure that the latest drivers are picked up when the DAC-V1 is next connected.

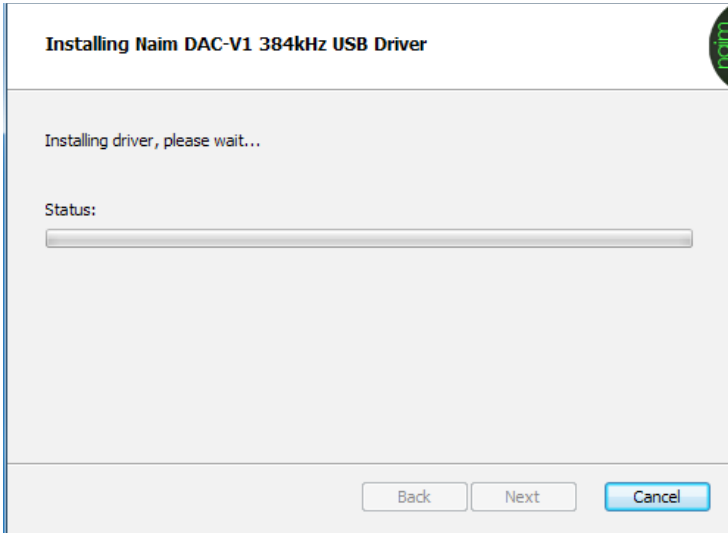
To install the Naim DAC-V1 drivers, please ensure you have the latest drivers package from the “Manuals and Downloads” tab of the DAC-V1 product page on the Naim Audio website ([www.NaimAudio.com](http://www.NaimAudio.com)). Once you have the drivers installer executable copied to your computer please run the driver installer by double clicking the drivers installer icon (or right click the icon and select “Open”).



The drivers installer will start up and you will be presented with the typical software installation dialogue as below which informs you what you are about to install.



Please select the "Next" button to continue with the installation or the "Cancel" button to abort the installation.

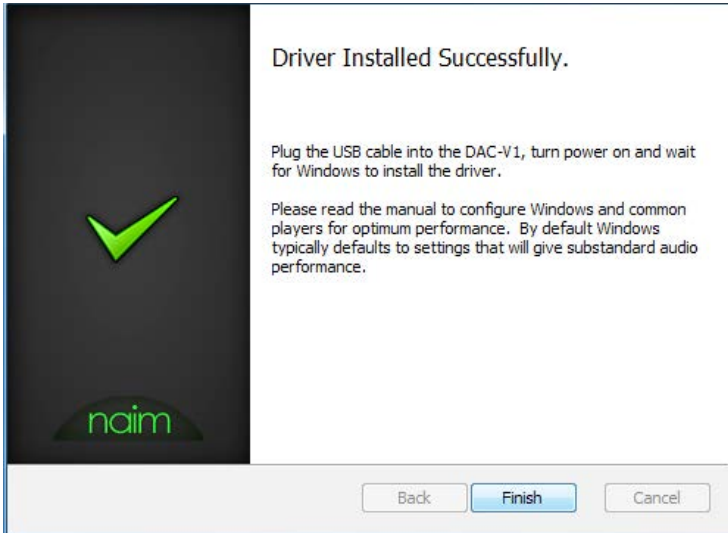


Please carefully read the licence agreement and - if you agree with the terms of that licence agreement - select the "I accept the terms in the Licence Agreement" checkbox and then select the "Next" button to continue with the installation or select the "Cancel" button to abort the installation.



The installation of the custom Naim DAC-V1 driver will proceed.

Windows will ask you to confirm that you wish to install the specific device driver - if you wish to install the driver then please select the "Install" button.



Once the driver has been completely installed you will see the above confirmation dialog and you can then simply select “Finish” to exit the installer.

You can now connect and power on your Naim DAC-V1 and the new driver will be loaded and associated with your unit.